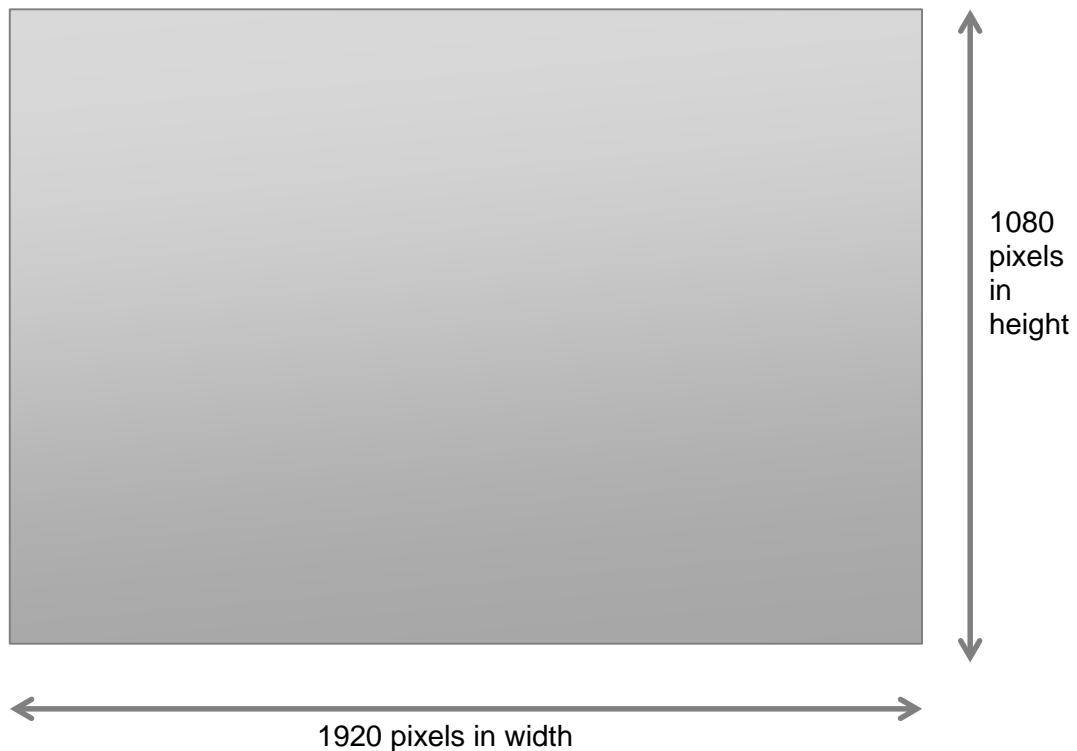




Image Sizes for Competitions

With the exception of Novice and Open Portfolio competitions, all images for WAUPS competitions shall be sized to a maximum of 1920 pixels wide by 1080 pixels high, and a maximum file size of 1,500KB (1.5MB). This is to ensure your images can be suitably presented using HD projectors and monitors, and it is not too large to email if required.

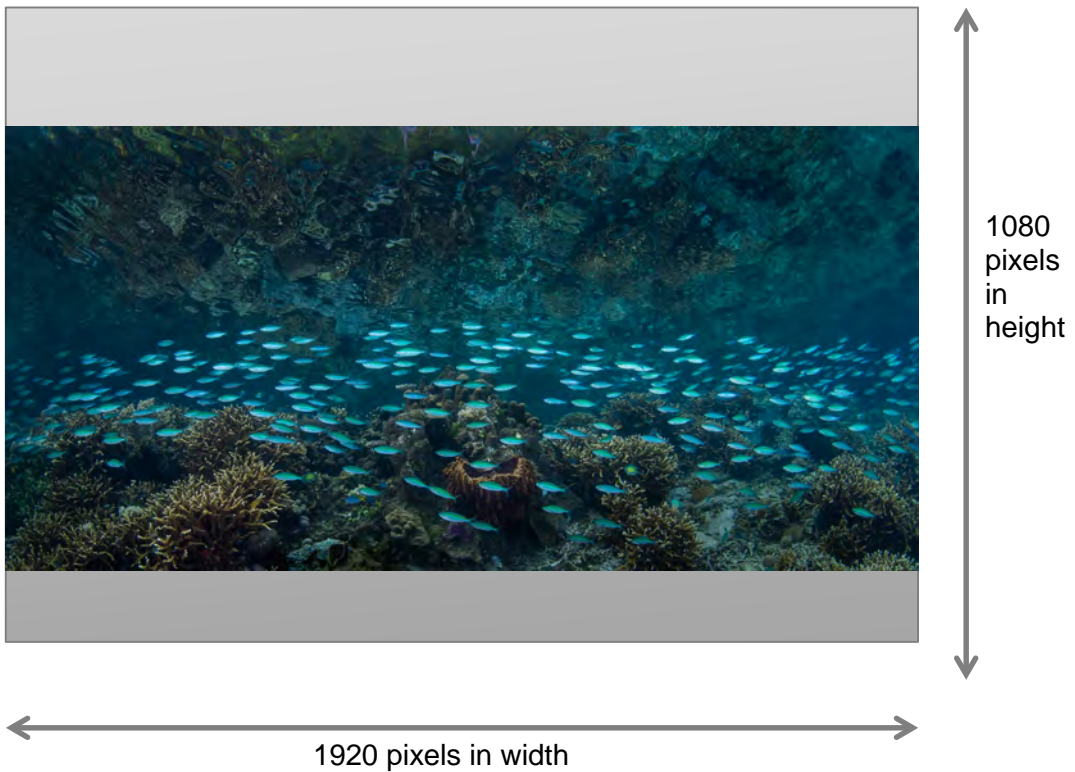
Your image should be sized to fit within the rectangle shape as follows:



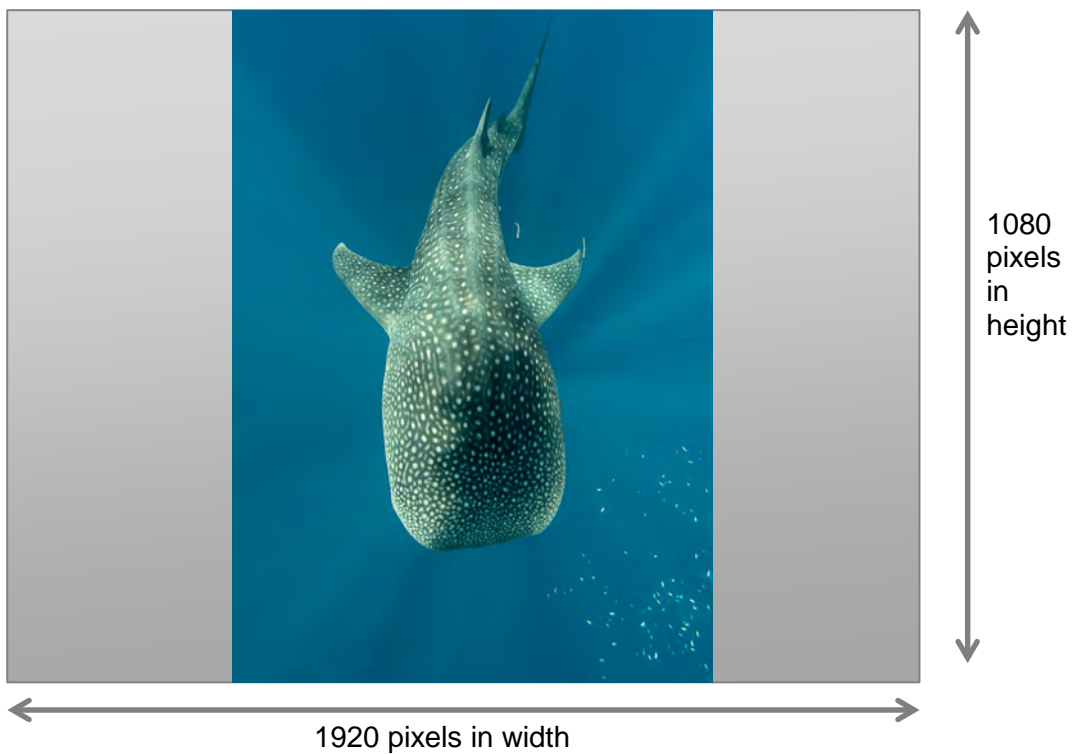
Typical examples are as follows...



Here the image is sized to being 1920 pixels wide but only 934 pixels high

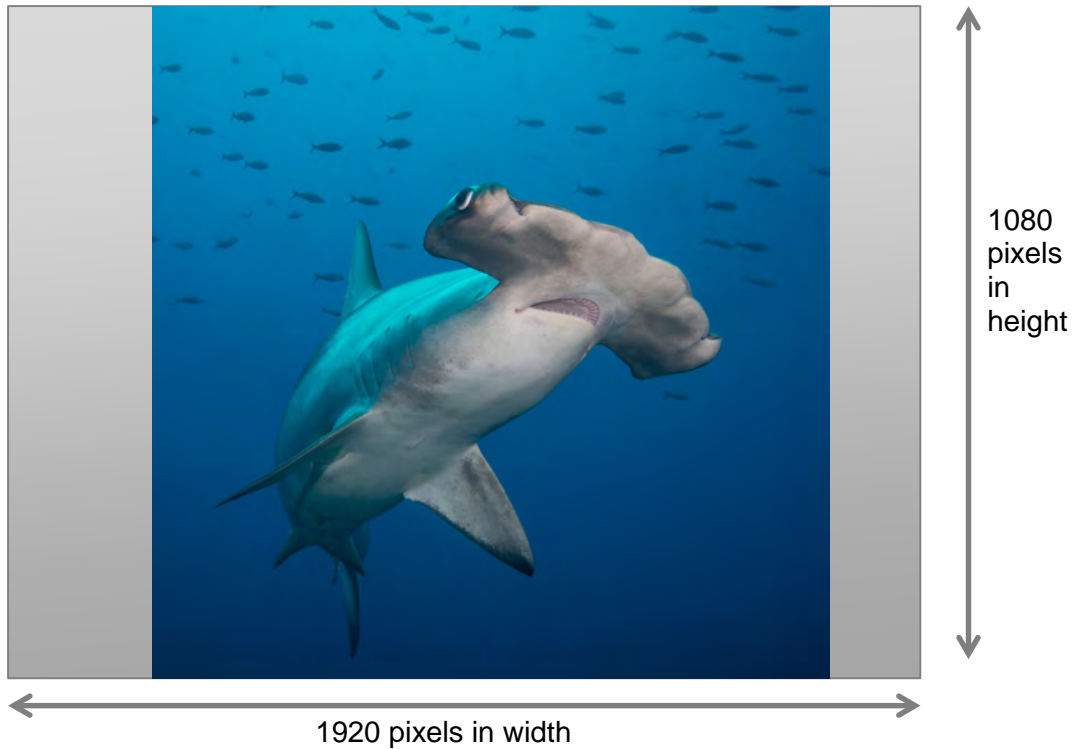


This image is sized to being 1080 pixels high but only 810 pixels in width





A square image would be sized such that the maximum height is 1080 pixels and so would be the width.



Pixels Per inch (PPI)

For all images that are to be displayed on a computer monitor the pixels per inch should be set to 72ppi.

For all images that are submitted for printing the sizing is slightly different with a maximum width of 3600 on the long side and 300ppi. This will suit a print in the size range of between A4 to A3.

Lightroom

Below is a screen shot of the settings for exporting an image from Lightroom, to suit the image sizing of 1920 pixels wide by 1080 pixels high by 72 ppi and maximum file size of 1,500KB.



Hard Drive ▾

Export One File

▼ Export Location

Export To: Specific folder ▾

Folder: /Users/mandab/Documents/WAUPS ▾ Choose...

Put in Subfolder: Spring 2012

Add to This Catalog Add to Stack: Below Original ▾

Existing Files: Ask what to do ▾

▼ File Naming

Rename To: Filename ▾

Custom Text: Start Number:

Example: _3050570.jpg Extensions: Lowercase ▾

▼ Video

Include Video Files:

Video Format: ▾

Quality: ▾

▼ File Settings

Image Format: JPEG ▾ Quality: 100

Color Space: sRGB ▾ Limit File Size To: 1,500 K

▼ Image Sizing

Resize to Fit: Width & Height ▾ Don't Enlarge

W: 1,920 H: 1,080 pixels ▾ Resolution: 72 pixels per inch ▾

▼ Output Sharpening

Sharpen For: Screen ▾ Amount: High ▾

▼ Metadata

Include: All Metadata ▾

Remove Person Info Remove Location Info

Write Keywords as Lightroom Hierarchy

▼ Watermarking

Watermark: Amanda text white ▾

▼ Post-Processing

After Export: Do nothing ▾

Application: Choose an application... ▾ Choose...

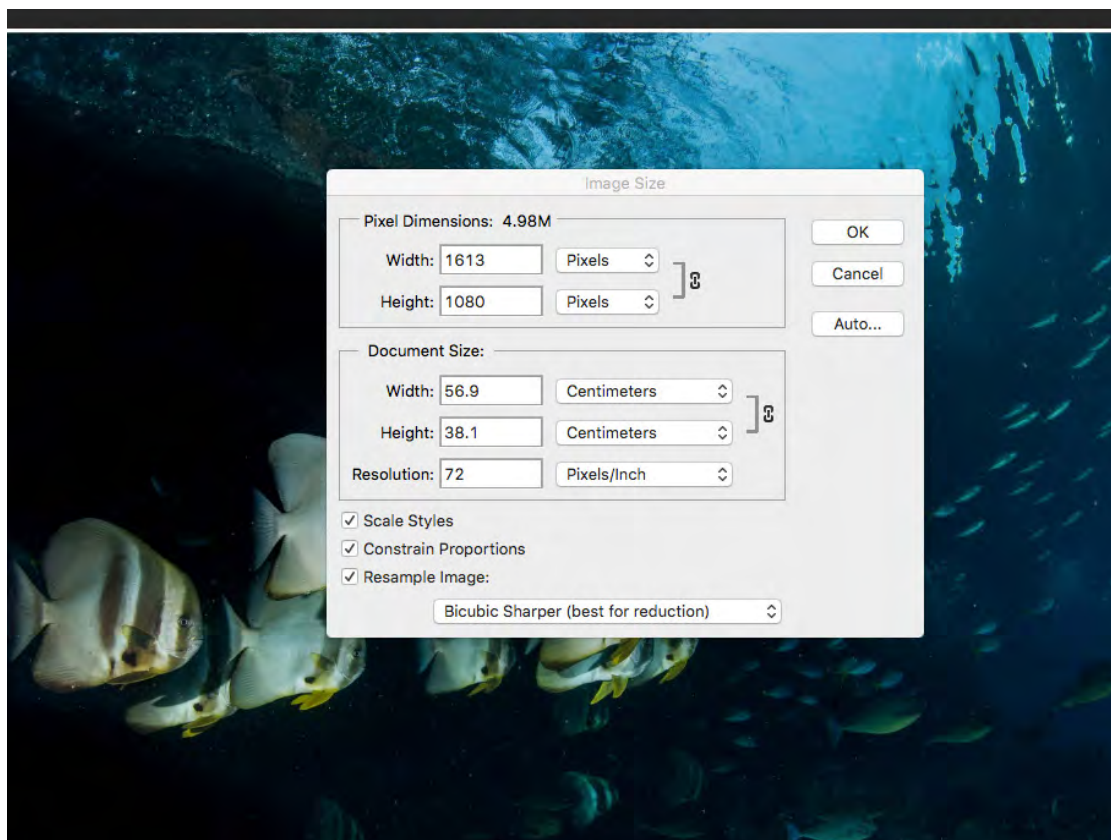
Cancel Export



Photoshop

Go to Image>Image Size and look at the dialog box:

- Make sure that the Resample box is ticked;
- Select 72 pixels/inch;
- Select Bicubic Sharper from the drop down box;
- Make sure the link icon between Width and Height is selected (this maintains the aspect ratio);
- Initially, the Width and Height will have the original image dimensions visible;
- Make sure that the dimensions are shown in pixels; and
- Change the height to 1080;
- Look at the new Width dimension. If it is 1920 or less you have finished (because the height was the limiting dimension);
- If the Width exceeds 1920, then type 1920 into the Width dimension. The height will then change to less than 1080. This will happen for very wide or pano images; and
- Click file save as and choose your jpeg quality to get an image under 1.5MB.





If you are working in a jpeg image and after resizing the image it is still above 1.5MB (the limit for WAUPS single image competitions), try the following:

- Go to File> Save for web;
- Select jpeg from the drop down list;
- In the Quality list, enter 100% and check the file size in the lower left corner of your image; and
- If its still over 1.5MB, gradually decrease the percentage until it is below 1.5MB.

